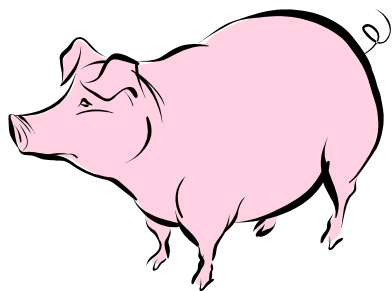
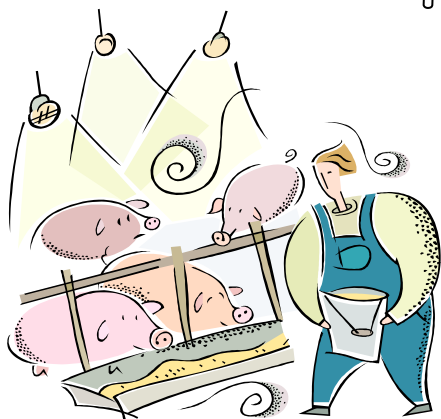


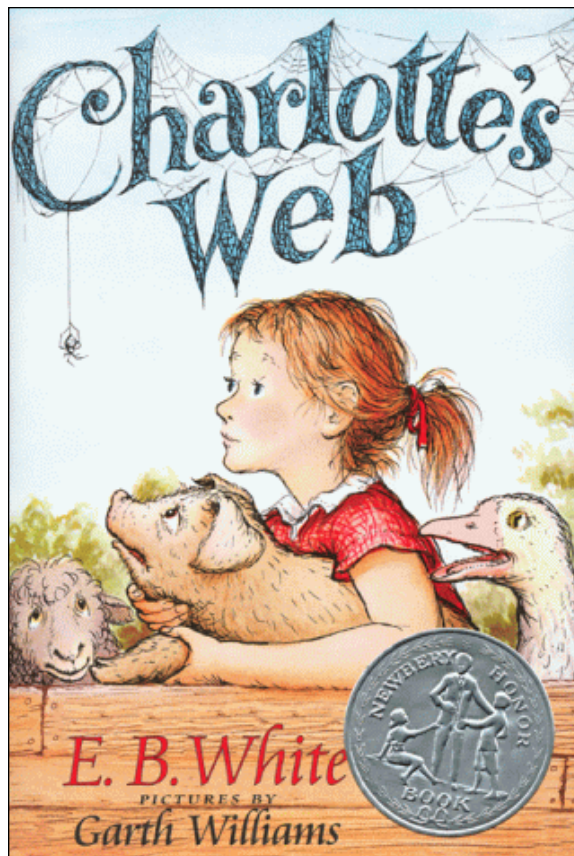
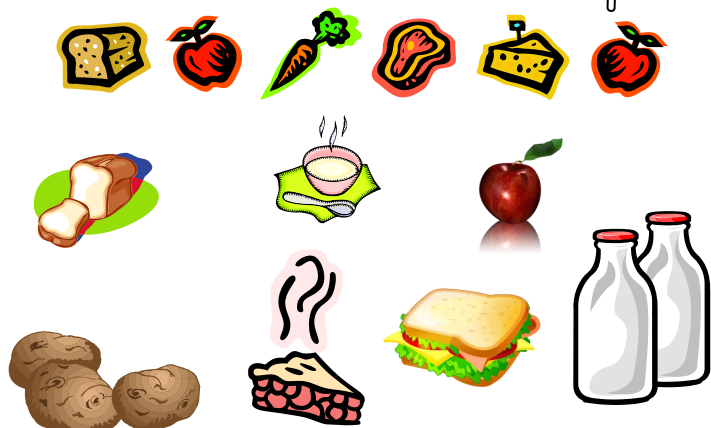
What do pigs eat?



Pigs eat slops.



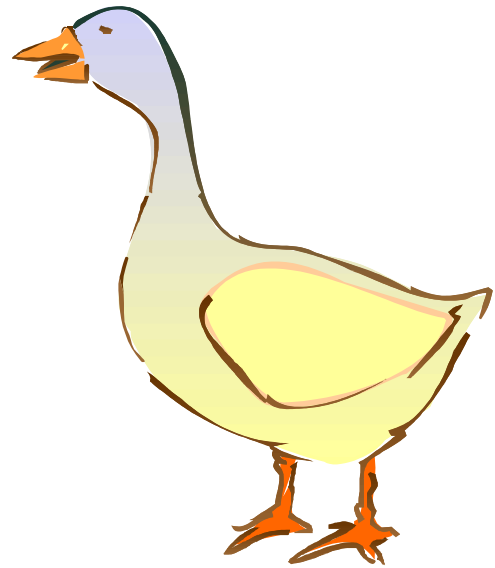
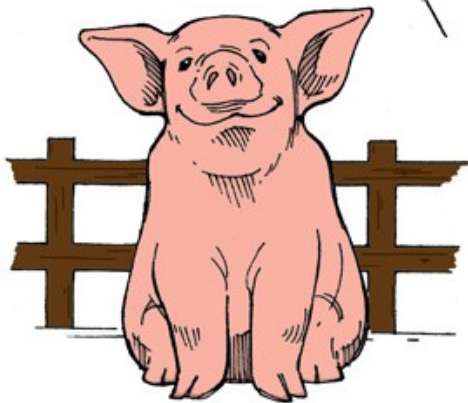
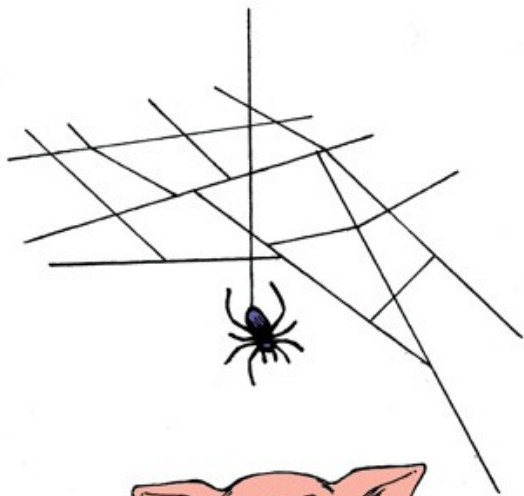
Wilbur eats slops.

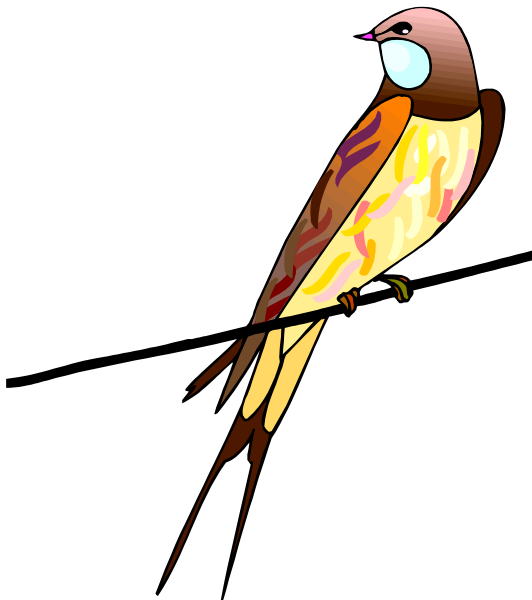
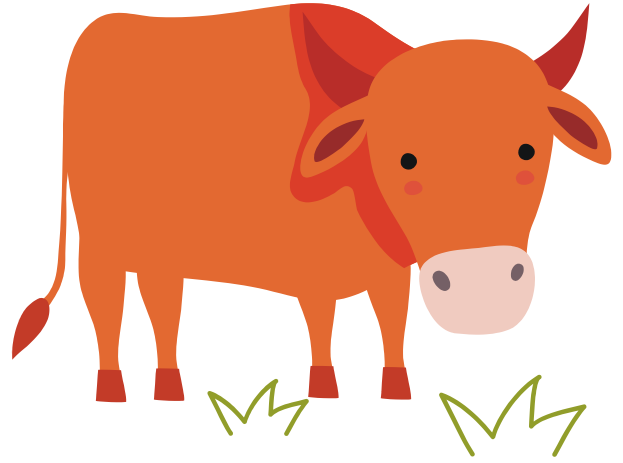
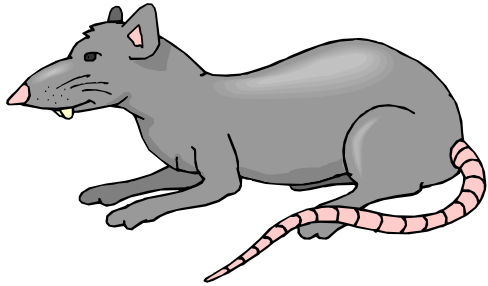


# The Barn



Who lives  
inside?





Horse

Cow

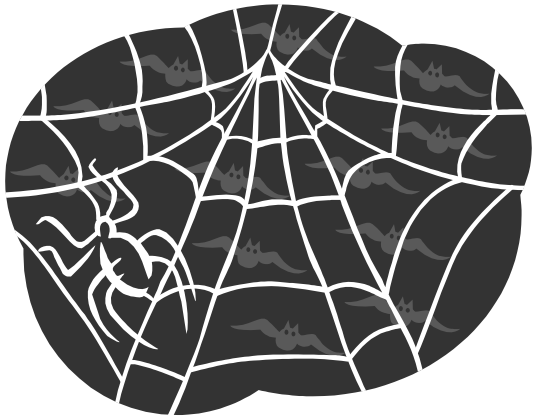
Swallow

Rat

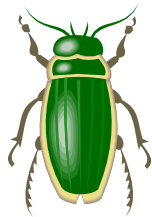
Sheep

Goose

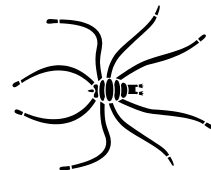
# What do spiders catch and eat?



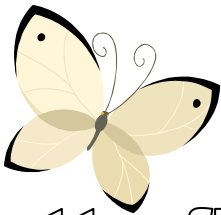
Fly



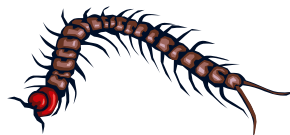
Beetle



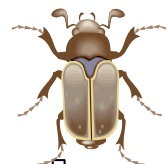
Daddy Long Leg



Butterfly



Centipede



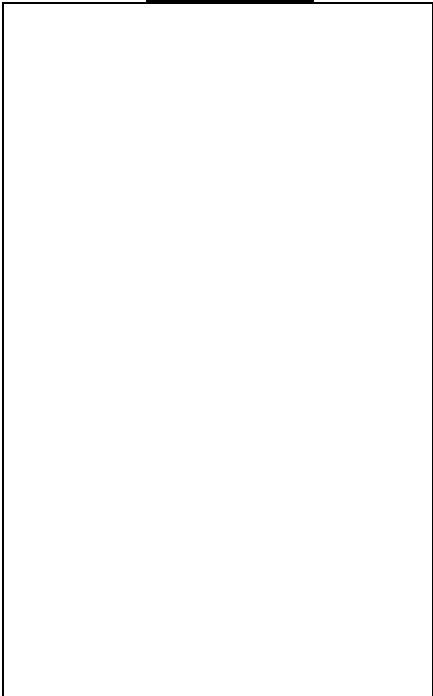
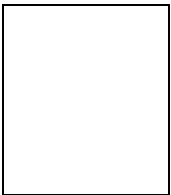
Cockroach



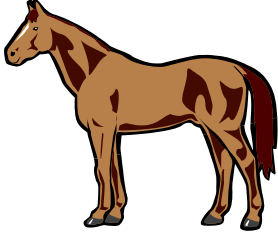
Grasshopper




Mosquito



Horse



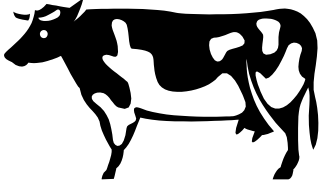
Foal




A section for the word "Horse". The word "Horse" is written in a large, white, outlined font. To its right is a colorful illustration of a brown horse with white spots. Further right, the word "Foal" is written in a similar font, with a smaller illustration of a brown foal below it.



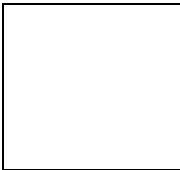
Cow



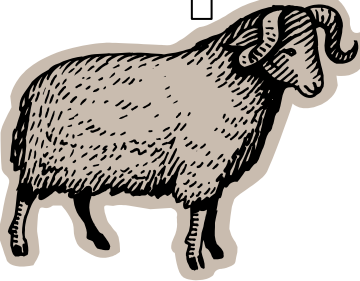
Calf




A section for the word "Cow". The word "Cow" is written in a large, white, outlined font. To its right is a black and white illustration of a cow. Further right, the word "Calf" is written in a similar font, with a smaller illustration of a brown calf below it.



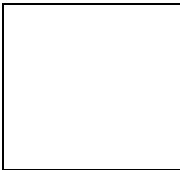
Sheep



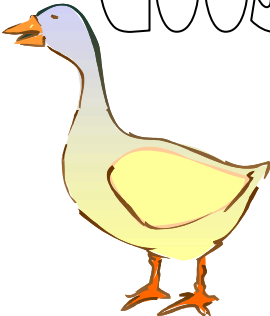
Lamb




A section for the word "Sheep". The word "Sheep" is written in a large, white, outlined font. To its right is a grey illustration of a sheep with curved horns. Further right, the word "Lamb" is written in a similar font, with a smaller illustration of a white lamb below it.



Goose



Gosling



A section for the word "Goose". The word "Goose" is written in a large, white, outlined font. To its right is a yellow illustration of a goose. Further right, the word "Gosling" is written in a similar font, with a smaller illustration of a white gosling below it.



rat

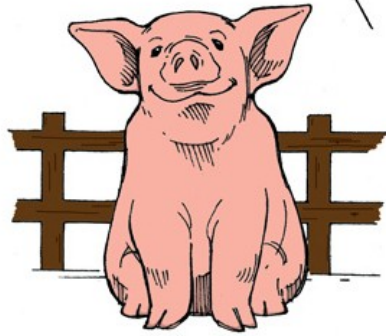
Templeton





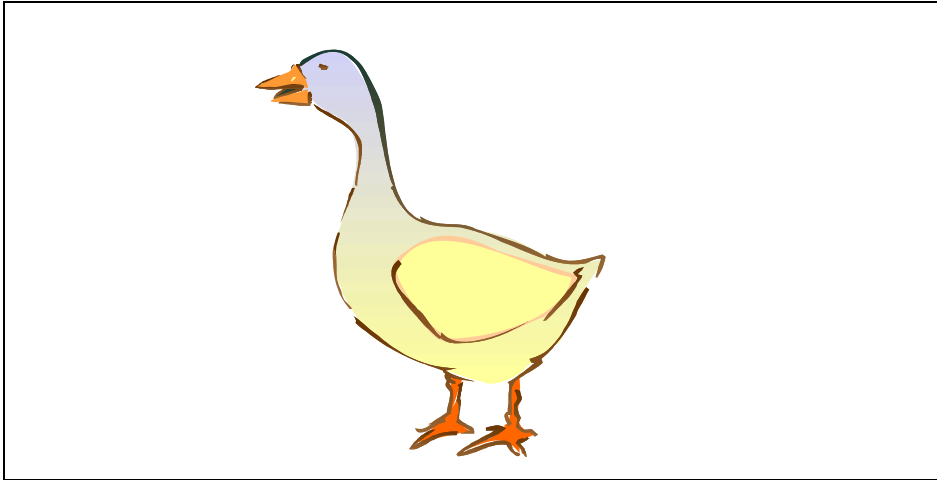
spider

Charlotte



p i g

wilbur

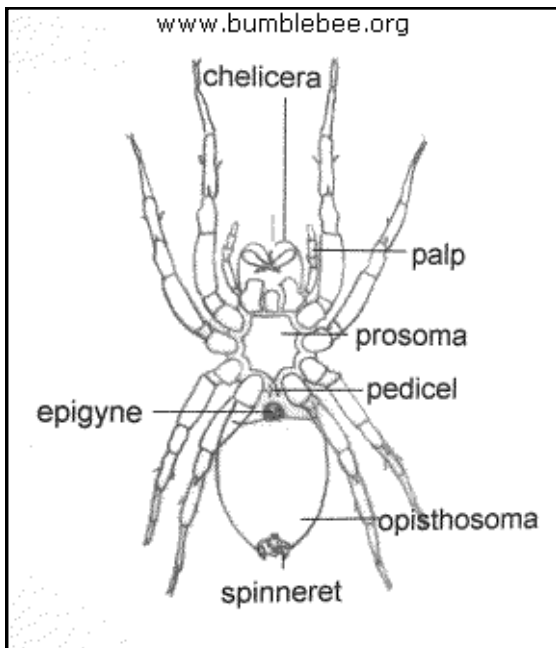
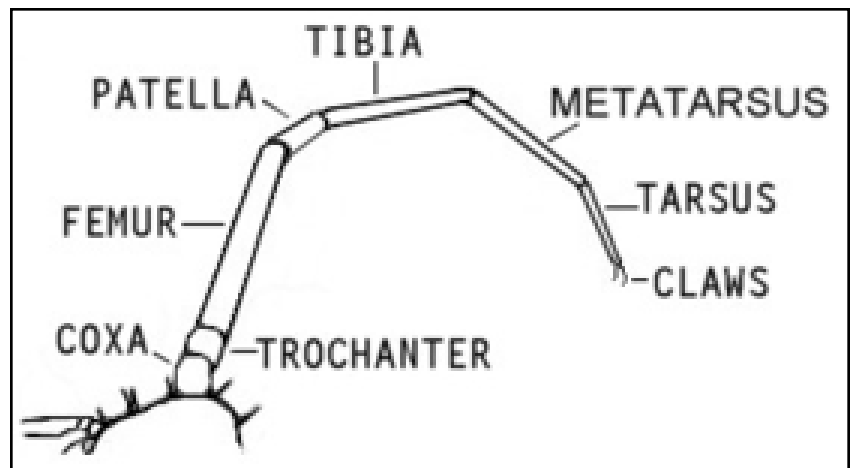
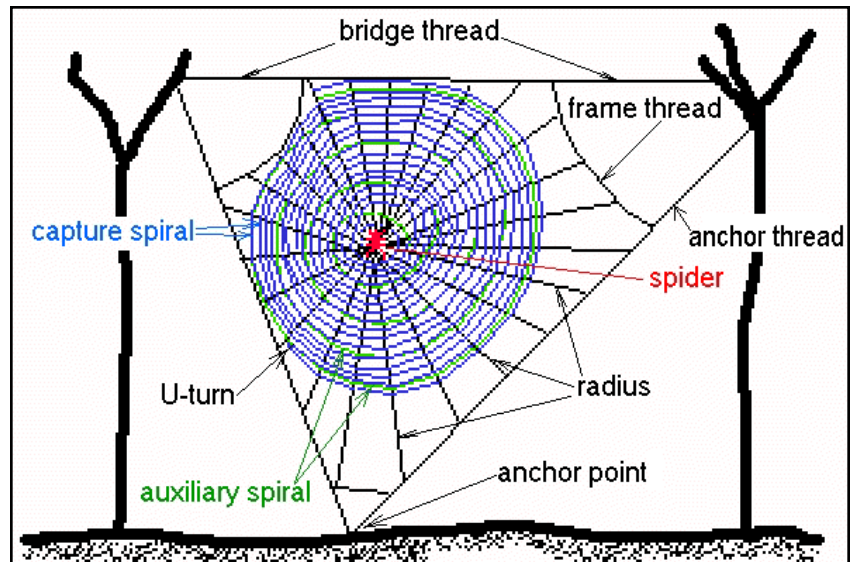


goose

Gussie

I	1	II	2
III	3	IV	4
V	5	VI	6
VII	7	VIII	8
IX	9	X	10
L	50	C	100
D	500	M	1000

Draw a spider



www.bumblebee.org



girl

Fern